

Fixed castor CLF 150 ALB

Transport Series CD - Wheel AL



-30 °C - +80 °C

++●

swivels easily

++●

wear resistant

++●

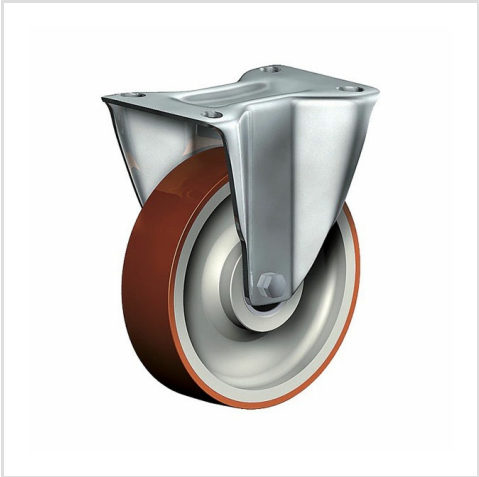
shock proof

++●

floor protective

++●

weather proof



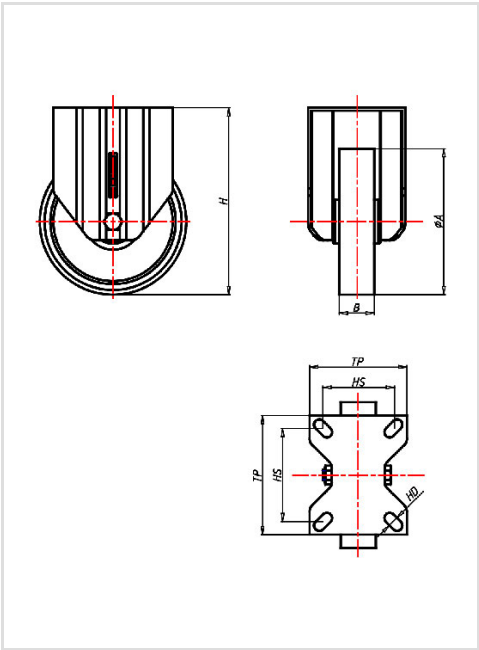
Wheel

Coated in injected polyurethane, 58±3 Shore D
High quality nylon wheel centre

Fork



Finish: electro-zinc plated, double ball bearing – revited, hardened steel balls thermoplastic dust protection ring, wheel axle bolted, total lock



| | |
|---|--------------------------------|
| Fixed castor | Wheel-Ø A x width B mm: 150x40 |
| Load Capacity kg: | 170 |
| Load capacity tested according to EN 12530 and EN 12527 | |
| Overall height H mm: | 181 |
| Dimension of top plate TP mm: | 102x83 |
| Hole spacing HS mm: | 80x60 |
| Hole-Ø HD mm: | 9 |
| Wheel bearing: | Roller bearing |

Advantages

- ✓ low rolling resistance
- ✓ high abrasion and tear resistance
- ✓ easy to clean
- ✓ good chemical resistance

Applications

- Metal-Technology
- Workshops
- Ingredient containers
- Dollies
- Carpentry
- Building-Industry